



FinancialFreedom™

WEALTH MANAGEMENT GROUP, LLC



WELCOME!

Welcome to Financial Freedom Wealth Management Group. We are a diverse, professional team that is passionate about inspiring you to work towards your financial goals. No matter where you are in your financial journey, we can provide the education, empowerment, and guidance you need. Our commitment to you is to care deeply about you and your financial life.

LPL Financial is one of the leading financial services companies and the largest independent broker/dealer in the nation.* For more than four decades, the firm has served as an enabling partner, supporting financial advisors in their goals of protecting and growing their clients' wealth.

LEARN ABOUT THE TEAM, [CLICK HERE.](#)

*As reported by Financial Planning magazine, 1996-2022, based on total revenue.

TABLE OF CONTENTS

[Our Services & About Us](#)

[LPL by the Numbers](#)

**[LPL Financial LLC
Relationship Summary](#)**



OUR COMPREHENSIVE SERVICES TO HELP YOU PURSUE YOUR FINANCIAL LIFE

Investment Management Services

- Personalized portfolio of investments
- Continual investment monitoring
- Retirement plan recommendations
- Account aggregation
- Risk management and asset protection
- Investments less correlated to the stock market
- Online-focused investment options

Retirement Income and Distribution Planning

- Income needs analysis
- Investment distribution strategy
- Estate tax liability analysis
- Roth IRA conversions
- Social Security analysis
- Healthcare and Medicare analysis
- Comprehensive financial plan

Tax Reduction Planning

- Comprehensive tax return review
- Tax reduction strategies
- Tax advantaged investments
- Consultation with your tax preparer

Business Planning

- Business owner exit and succession planning
- Company retirement plans
- Business disability, life and buyout insurances
- Hourly business consulting

Family Wealth and Legacy Planning

- Estate plan review
- Trust asset transfer assistance
- Charitable giving and legacy strategy
- Legacy session facilitation
- Beneficiary designation analysis and asset titling
- College funding
- Life and disability insurance
- Long-term care options
- Guidance when a loved one passes
- Memory investment planning
- Consultation with your attorney

Education, Communication and Personalized Attention

- Review meetings
- Quarterly newsletter updates
- Educational seminars and appreciation events
- One-on-one planning for your life events
- Hourly personal consulting
- Second opinion service
- Secure, online account access
- Online planning tools

Our Process: The Financial Freedom Advantage™

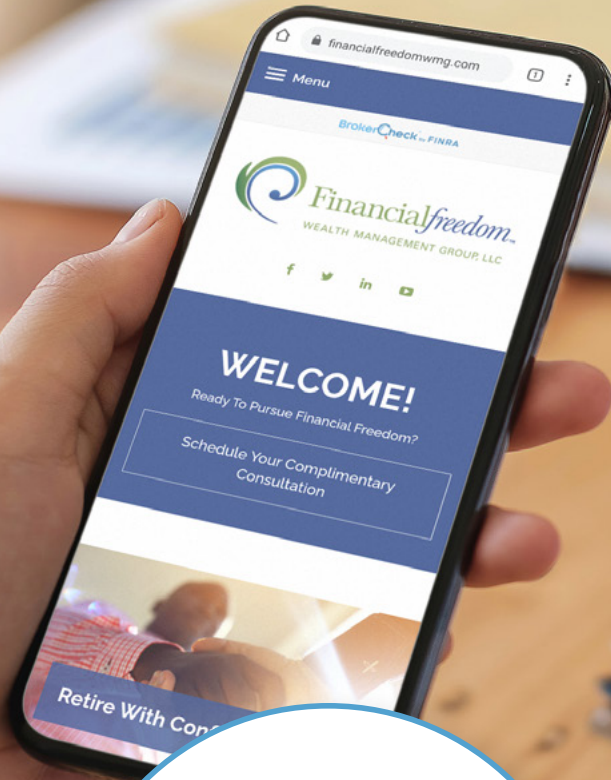
Our collaborative process is designed to empower you to pursue financial freedom. We will guide you through your financial journey with education and collaboration to create a personalized strategy that fits your goals.





Financialfreedom™

WEALTH MANAGEMENT GROUP, LLC



Text or call us at 458.777.4458
info@financialfreedomwmg.com
FinancialFreedomWMG.com

Our Commitment

**To care deeply
about you and your
financial life**

Our Core Values

Treat all people with respect
Never compromise
our integrity
Delight our clients
Embrace our team
culture

Our Focus

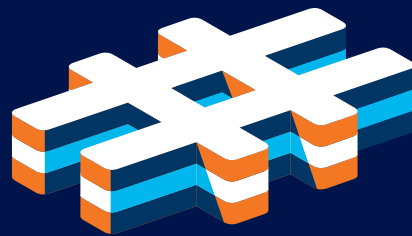
To create a plan for
your dreams and
inspire you to pursue
financial freedom

As your LPL financial advisors, we aim to have you:

- Retire Confidently
- Maximize Your Legacy
- Optimize Your Tax Situation
- Receive Relevant, Timely Data, and Frequent Communication

We are a diverse, professional team who are committed to helping you pursue your financial goals. No matter where you are on your financial journey, we can provide the ongoing education and guidance to help you along the way.

LPL BY THE NUMBERS



AN INDUSTRY LEADER

1989 LPL was founded in 1989

22K+ Financial professionals serviced

1K+ Financial institution partners

FORTUNE 500 Ranked no. 440 on the Fortune 500 List¹



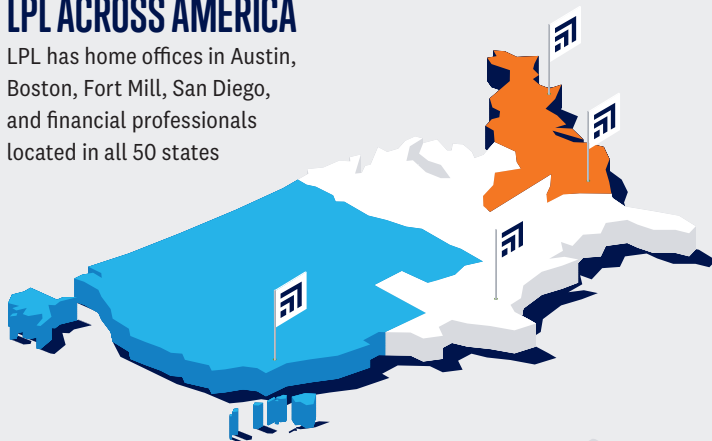
#1 INDEPENDENT BROKER/DEALER
In the United States²

#1 MARKET SHARE
among 3rd-party providers of brokerage services to banks and credit unions³

#3 RIA CUSTODIAN
In the United States⁴

LPL ACROSS AMERICA

LPL has home offices in Austin, Boston, Fort Mill, San Diego, and financial professionals located in all 50 states



SERVING & PROTECTING YOUR ASSETS

7.9M+ Client accounts serviced

\$1T+ Brokerage and advisory client assets, serviced or custodied

24/7 Access to your account information via our mobile app and portal



\$40M DEDICATED ANNUAL BUDGET
We invest in cybersecurity and data privacy to keep you and your data protected from cyberattacks

150+ CYBERSECURITY PROFESSIONALS
to keep you and your clients protected

ZERO PROPRIETARY LPL PRODUCTS WITH THOUSANDS OF INVESTMENT OPTIONS



Access to a breadth of investment solutions—from mutual funds to bonds to alternative investments—and fee-based investment programs that your financial professional can leverage to craft your customized portfolio

Data as of October 30, 2023

1 Fortune 500 ranks U.S. companies based on a review of the prior year's total revenue and factors such as profits after taxes, year-end assets and total stockholders' equity.

2 As reported by Financial Planning magazine, June 1996-2023, based on total revenue.

3 2021-2022 Kehler Bielan Research & Consulting Annual TPM Report. Based on market share of AUM, revenue, and advisors.

4 Cerulli Associates, 2022 U.S. RIA Marketplace Report

LPL.COM

 LPL Financial

LPL BY THE NUMBERS

ABOUT LPL FINANCIAL:

LPL Financial (Nasdaq: LPLA) was founded on the principle that the firm should work for the advisor, and not the other way around. Today, LPL is a leader in the markets we serve,* supporting more than 22,000 financial advisors, and more than 1,000 institution-based investment programs and 500 independent RIA firms nationwide. We are steadfast in our commitment to the advisor-centered model and the belief that Americans deserve access to personalized guidance from a financial advisor. At LPL, independence means that advisors have the freedom they deserve to choose the business model, services, and technology resources that allow them to run their perfect practice. And they have the freedom to manage their client relationships, because they know their clients best. Simply put, we take care of our advisors, so they can take care of their clients.

*Top RIA custodian (Cerulli Associates, 2022 U.S. RIA Marketplace Report); No. 1 Independent Broker-Dealer in the U.S. (Based on total revenues, Financial Planning magazine 1996-2023); among third-party providers of brokerage services to banks and credit unions, No. 1 in AUM Growth from Financial Institutions; No. 1 in Market Share of AUM from Financial Institutions; No. 1 in Market Share of Revenue from Financial Institutions; No. 1 on Financial Institution Market Share; No. 1 on Share of Advisors. (2021-2022 Kehler Bielan Research & Consulting Annual TPM Report). Fortune 500 as of June 2023.

This material was prepared by LPL Financial, LLC.

Securities and advisory services offered through LPL Financial (LPL), a registered investment advisor and broker-dealer (member FINRA/SIPC). Insurance products are offered through LPL or its licensed affiliates. To the extent you are receiving investment advice from a separately registered independent investment advisor that is not an LPL Financial affiliate, please note LPL Financial makes no representation with respect to such entity.

If your financial professional is located at a bank or credit union, please note that the bank/credit union **is not** registered as a broker-dealer or investment advisor. Registered representatives of LPL may also be employees of the bank/credit union. These products and services are being offered through LPL or its affiliates, which are separate entities from, and not affiliates of, the bank/credit union. Securities and insurance offered through LPL or its affiliates are:

Not Insured by FDIC/NCUA or Any Other Government Agency	Not Bank/Credit Union Guaranteed	Not Bank/Credit Union Deposits or Obligations	May Lose Value
--	---	--	-----------------------

LPL FINANCIAL LLC (LPL) RELATIONSHIP SUMMARY

Effective March 31, 2022



LPL (referred to as “we” or “us”) is registered with the U.S. Securities and Exchange Commission as a broker-dealer and an investment adviser. We have a network of financial professionals (“Professionals”) who offer brokerage and investment advisory services. Brokerage and investment advisory services, and the fees we charge for them, differ, and it’s important that you understand the differences. This relationship summary will

explain the various services we offer, how we charge for those services, and conflicts of interest that exist when we provide our services. To help you research firms and financial professionals, you can access free and simple tools at [Investor.gov/CRS](https://www.investor.gov/CRS), which also provides educational materials about broker-dealers, investment advisers, and investing.

What investment services and advice can you provide me?

Our Professionals offer brokerage services, investment advisory services, or both, depending on their licenses. Each Professional generally provides access to a range of investment products, such as stocks, bonds, exchange-traded funds (ETFs), mutual funds, annuities, and alternative investments. Please note that the range of investment options available to you may be limited depending on the licenses your Professional holds or if he or she is located at a financial institution that does not offer certain options. Your Professional or account program may also have specific

requirements, such as account or investment minimums. We encourage you to ask your Professional whether any investment limitations or account requirements apply.

If your Professional offers you both brokerage and advisory services, your Professional will inform you when he or she offers an investment recommendation or advice, and whether the recommendation or advice is part of a brokerage or advisory service. Some of the key differences between brokerage and investment advisory services are described below.

Brokerage Services

- Brokerage services include taking your orders and executing your securities transactions; making recommendations for you to buy, sell, or hold securities; and holding your securities for safekeeping (known as having “custody” of your securities).
- In most cases, we provide recommendations to you on specific investments, but you make the final investment decisions for your account. We also have a program available through a limited number of financial institutions in which you make investment decisions on your own without any recommendations from us.
- We don’t monitor brokerage account investments for you, unless we state otherwise in writing.
- We may provide brokerage services (but not investment recommendations) to you if your Professional is providing advisory services through a separate investment advisory firm.

Investment Advisory Services

- Some of the investment advisory services we offer include wrap fee programs and non-wrap fee programs; mutual fund asset allocation programs; advisory programs offered by third-party investment advisory firms; financial planning services; retirement plan consulting; investment research; digital advice programs; and other custom advisory services.
- You’ll typically grant us discretion to buy and sell investments in your account without asking you in advance. You may limit our discretion, such as by imposing reasonable restrictions on investing in certain securities or groups of securities. In other investment advisory accounts, you grant investment discretion to another financial institution.
- Some of our investment advisory accounts are nondiscretionary, which means you are required to preapprove each investment transaction that we recommend.
- We’ll typically monitor accounts, and specific investments within accounts, on an ongoing basis to align with your investment goals. However, in limited-scope consulting or advisory relationships, we won’t provide ongoing monitoring.



More detailed information about our advisory services can be found in the [Form ADV for your advisory program](#). Detailed information about our brokerage services can be found at [Brokerage Compensation Information and Related Conflicts of Interest](#). If viewing a paper version of this form, please visit lpl.com/CRS for hyperlinks to these documents.

📌 Questions to ask your Professional:

- *Given my financial situation, should I choose an investment advisory service? Should I choose a brokerage service? Should I choose both types of services? Why or why not?*
- *How will you choose investments to recommend to me?*
- *What is your relevant experience, including your licenses, education, and other qualifications? What do these qualifications mean?*

What fees will I pay?

Investing is an individual journey, and we want to provide you with options. Below we outline the fees you could be charged for both brokerage and advisory accounts depending on your investment

choices. Fee Schedules for our brokerage and advisory programs can be found lpl.com.

Fees Associated with Brokerage Services

- For brokerage services, we charge a transaction-based fee (sometimes referred to as a commission) every time you buy or sell an investment. The amount you pay as a transaction-based fee varies according to the particular investment and amount invested. The more trades you make, the more transaction-based fees we earn. This creates an incentive to encourage you to trade often.
- For investments in stocks or ETFs, the transaction-based fee is usually charged as a separate commission or sales charge. For investments in bonds, this fee is typically included as part of the price you pay for the investment (called a markup or markdown).
- For investments in certain products like mutual funds, annuities, and alternative investments, we receive transaction-based fees from the investment product sponsor in the form of asset-based sales charges (e.g., sales loads). These fees are based on the amount invested in a product and, depending on the product, may be based on how long you hold the investment. Our receipt of asset-based sales loads creates an incentive to recommend products or sponsors that include such charges.

Fees Associated with Investment Advisory Accounts

- For investment advisory services, we typically charge an ongoing quarterly fee (sometimes referred to as an asset-based fee). This fee is a percentage of the value of your account. You pay this fee even if you don't buy or sell investments. The more assets you have in an asset-based fee account, the more you'll pay us in fees. This creates an incentive to encourage you to increase the size of your account, including by transferring or rolling over assets from other accounts. For some types of accounts, there is a per transaction charge in addition to an asset-based fee. We may also charge an hourly fee or fixed fee for additional services such as financial planning and consulting services that are of limited duration or nature.
- For wrap fee program accounts, you will pay us a single asset-based fee for advisory services. This fee also covers most transaction costs and certain administrative and custodial costs associated with your investments. If you expect to trade infrequently or to pursue a "buy and hold" strategy, a wrap fee program may cost you more than paying for the program's services separately, and you may want to consider a brokerage relationship rather than an advisory relationship.
- The fee you pay to your Professional is generally negotiated with him or her directly, and subject to different maximums, depending on the advisory program selected.

Other Fees and Costs

If applicable to your account, we'll charge you directly for other fees in addition to brokerage commissions and advisory fees, including: (1) account maintenance fees such as custody, trade confirmation processing, corporate actions, and transfer fees; (2) cash management fees such as cash sweep, checking, and wire fees; and (3) investment specific fees such as those for

administration of alternative investments or for foreign securities. See the Fee Schedules for our brokerage and advisory programs at lpl.com for more information. You should understand that these fees are not charged by us if your investment is in an account that is held directly with the sponsor, and not in an LPL investment account.



You may also incur fees charged by the particular investment product in which you are invested, including mutual funds, ETFs, and other pooled funds, in addition to brokerage commissions and advisory fees charged by us. Some of these fees may be shared, as described below in [Third-Party Payments](#). Certain investment products have significant fees triggered by particular events, e.g., annuities may include mortality, expense, and administrative fees, and fees for excessive transfers or early withdrawals.

You will pay fees and costs whether you make or lose money on your investments. Fees and costs will reduce any amount of money you make on your investments over time. Please make sure you understand what fees and costs you are paying. Detailed

information on our advisory fees can be found in the [Form ADV for your advisory program](#). Detailed information on our brokerage fees can be found at [Brokerage Compensation Information and Related Conflicts of Interest](#) and, depending on the investment product in which you invest, may be included in the product's prospectus or other offering document. If viewing a paper version of this form, please visit lpl.com/CRS for hyperlinks to these documents.

📌 Questions to ask your Professional:

Help me understand how these fees and costs might affect my investments. If I give you \$10,000 to invest, how much will go to fees and costs, and how much will be invested for me?

What are your legal obligations to me when providing recommendations as my broker-dealer or when acting as my investment adviser? How else does your firm make money and what conflicts of interest do you have?

When we provide you with a recommendation as your broker-dealer or act as your investment adviser, we have to act in your best interest and not put our interest ahead of yours. At the same time, the way we make money creates some conflicts with your interests. You should understand and ask us about these conflicts because they can affect the recommendations and investment advice we provide you. Here are some examples to help you understand what this means. If you have questions about whether any of these situations could apply to your investments, ask your Professional.

Third-Party Payments

We receive compensation from third parties related to investments you make in certain products, including mutual funds, ETFs, annuities, alternative investments, and other investments. This compensation includes ongoing distribution charges (e.g., 12b-1 fees or trail payments), which an investment product charges you and then pays to us. We also receive fees from investment products and/or their sponsors for recordkeeping and other administrative services we provide in relation to your investments. In some accounts we offer, uninvested cash is automatically placed into interest-bearing federally insured bank accounts. We receive fees for your participation in these “cash sweep” programs from the banks sponsoring the programs. The fees we receive are typically higher than the interest you earn on the cash held in the bank accounts and are in addition to any fees you pay to us. This creates an incentive for LPL if you maintain a cash balance in your account. [Revenue sharing payments](#) are another type of third-party compensation we receive from sponsors who participate in our marketing programs. These programs support our product marketing to our Professionals and for education and training efforts, and facilitate communications between sponsors and our Professionals. Finally, certain sponsors pay us to make their investment products available on our platform. Because we receive

payments from these third parties, there is an inherent incentive for us to recommend or invest your assets in those investment products. Detailed information regarding third-party payments can be found in the [Third-Party Compensation and Related Conflicts of Interest](#) document on lpl.com.

Principal Trading

In brokerage accounts, we sometimes directly buy from you or sell to you investments including bonds or certain shares of mutual funds, unit investment trusts (UITs), or alternative investments. These are called principal trades. If the principal trade involves a bond, we receive a markup or markdown by either buying the bond from you at a lower price than we will sell it for or by selling the bond to you at a higher price than we bought it for. That creates an incentive for us to either buy the bond from you at the lowest price possible or sell the bond to you at the highest price possible and maximize our profit on the principal trade. In advisory accounts, purchases of mutual funds, UITs, or alternative investments may be processed through our proprietary account, but we do not receive a markup or markdown in these trades. Also, in certain advisory accounts where a third-party investment advisory firm has discretion, we trade as principal and receive a markup or markdown.

Detailed information on our conflicts of interest can be found in the [Form ADV for your advisory program](#) and in [Brokerage Compensation Information and Related Conflicts of Interest](#). If viewing a paper version of this form, please visit lpl.com/CRS for hyperlinks to these documents.

📌 Questions to ask your Professional:

How might your conflicts of interest affect me, and how will you address them?



How do your financial professionals make money?

Our Professionals are primarily independent contractors, although a portion are employees or employees of an affiliated company. The agreement between each Professional and LPL sets out the payments we make to them. Those who provide investment advisory services receive a portion of the advisory fee you pay. Professionals who provide you brokerage services receive a portion of the commissions or markups/markdowns from your trades. Receiving a portion of the advisory or brokerage fees you pay to us creates an incentive for them to encourage you to increase your investment account size or trade more frequently. We also compensate Professionals based on production, including payments based on the amount of client assets they service and the products they sell. In addition, our Professionals receive different levels of compensation for selling different types of investments or services. This could include, for example, a share of the 12b-1 fees, trail payments, or sales loads paid to us by an investment product. Although your Professional must recommend investment products or manage your account in your best interest, these additional forms of compensation create an incentive for them to recommend specific financial products.

Our Professionals may receive compensation from us in other ways, including:

- Transition assistance if he or she moves to LPL from another company. This assistance can include forgivable loans, advance payment of advisory fees, and/or waiving or reducing other

costs associated with transitioning the Professional's business. This assistance creates an incentive to migrate and maintain business on our platform from another investment platform, and to sell or recommend the sale of investments held in an account if we do not offer those investments.

- Waived or reduced costs and fees (e.g., for administrative services that we provide for your accounts, attending our conferences and events, and free or reduced-cost marketing materials). These waived and reduced costs and fees create an incentive for Professionals to associate with us instead of other financial firms.
- Equity awards in our parent company, LPL Financial Holdings Inc., which give your Professional an incentive to remain with us during the vesting period applicable to his or her stock holdings (the period of time before the stock is unconditionally owned). This also gives the Professional a financial interest in the success of our business.

Your Professional is legally required to act in your best interest and not put his or her interests ahead of your own. We have systems in place to mitigate the conflicts of interest that arise from the way he or she makes money, including systems to review whether a recommendation is in your best interest. More information on compensation can be found at [Brokerage Compensation Information and Related Conflicts of Interest](#). If viewing a paper version of this form, please visit lpl.com/CRS for a hyperlink to this document.

Do you or your financial professionals have legal or disciplinary history?

Yes. Visit Investor.gov/CRS for a free and simple search tool to research LPL and our Professionals.

Questions to ask your Professional:

As a financial professional, do you have any disciplinary history? For what type of conduct?

Additional Information

Please visit the [Disclosures page on lpl.com](#) for more information, including a copy of the agreement for the account and/or program you are considering, the Form ADV Brochure for any advisory program you are considering, detailed information on our brokerage services under [Brokerage Compensation and Related Conflicts of Interest](#), and more information regarding our brokerage and advisory programs under [Third Party Compensation and Related Conflicts of Interest](#).

Please visit the [Investor Regulatory & Educational Resources page](#) on lpl.com to learn more about how to determine your investment objective and risk tolerance, among other items.

We are affiliated with other investment firms. If your Professional works with Fortigent, LLC, you can find the relationship summary for that firm at lpl.com/fortigent.html. More information on our affiliations can be found in the [Form ADV for your advisory program](#).

If viewing a paper version of this form, please visit lpl.com/CRS for hyperlinks to cross-referenced documents.

To request up-to-date information or a copy of this relationship summary, please call us at (800) 558-7567.

We also encourage you to review the general information provided by the U.S. Securities and Exchange Commission regarding investing, choosing an investment professional, and related considerations, available by visiting Investor.gov.

Questions to ask your Professional:

Who is my primary contact person? Is he or she a representative of an investment adviser or a broker dealer? Who can I talk to if I have concerns about how this person is treating me?